

# **Innovate and Cultivate**

## **Children and Families**

# Context: Children's Change Programme



- ◆ Deleting duplication and unhelpful distinctions between existing services
- ◆ Maximising resources
- ◆ Keeping and developing the best services
- ◆ Think family - working systemically, delivering locally, around the Thrive model
- ◆ Building capacity (partners and communities)

# Integrated Front Door

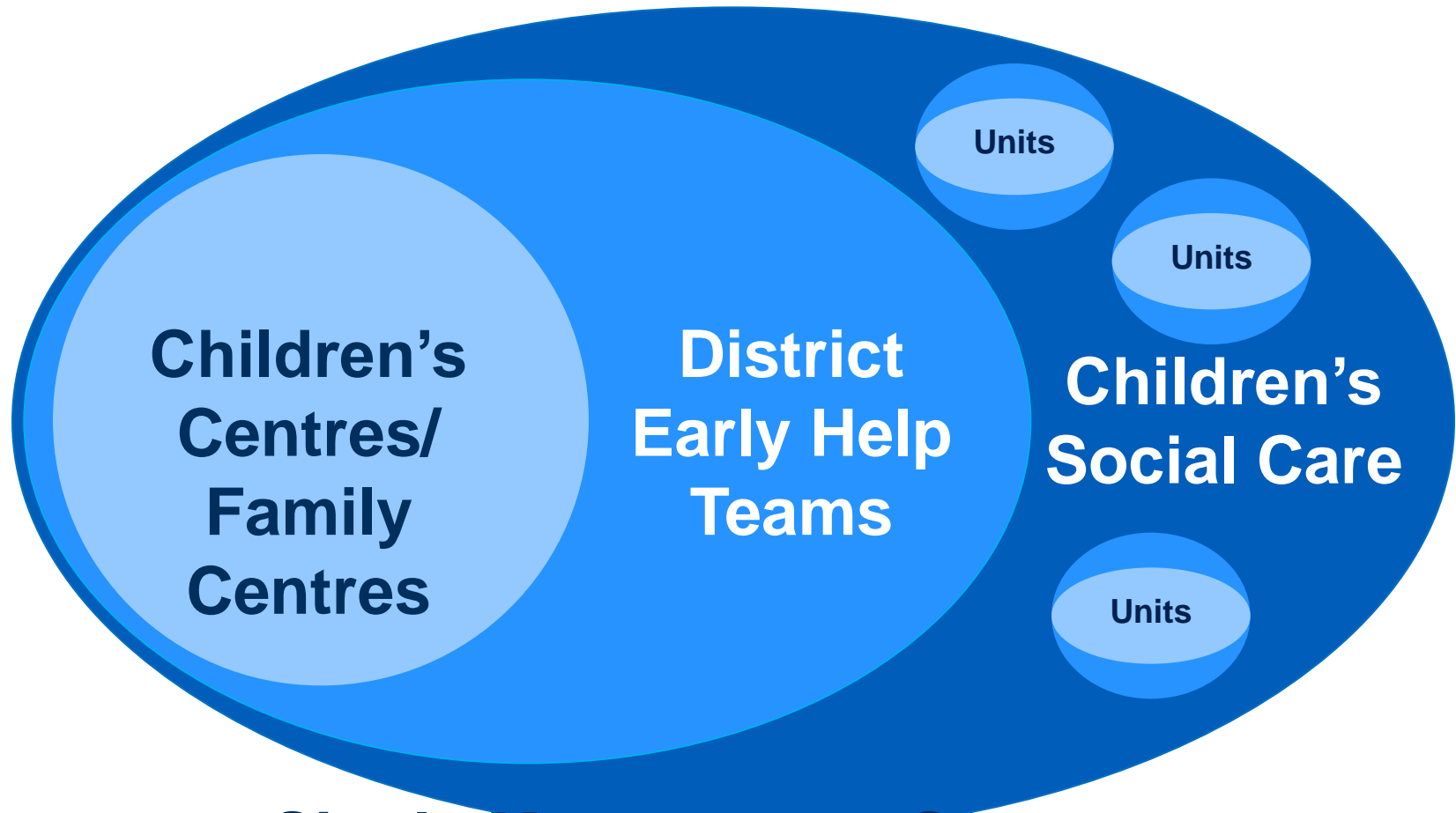
## An Integrated Front Door

Single point of entry for all notifications regarding safeguarding and promoting the well-being of children made up of:

- MASH
- Early Help Hub



# County Council District Delivery Model



**Single Management Structures**

# Key themes

- ◆ Building Connections between the Voluntary Sector and County Council services
- ◆ Supporting Emotional Well-being in high needs communities
- ◆ Youth work in high needs communities
- ◆ Community based family support activities in high needs communities